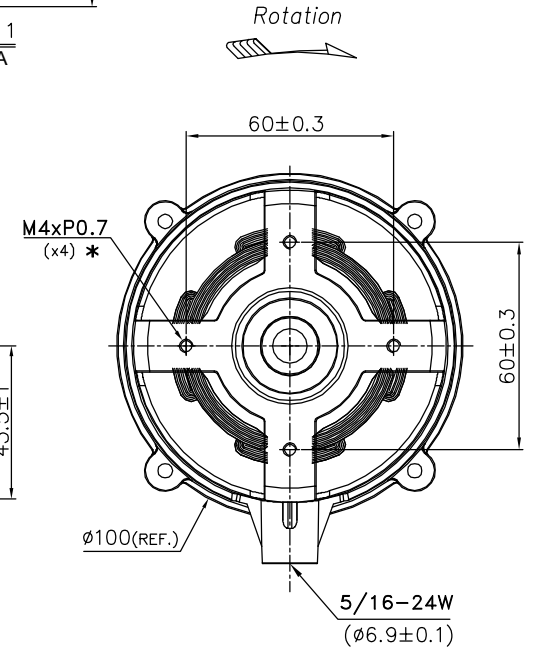
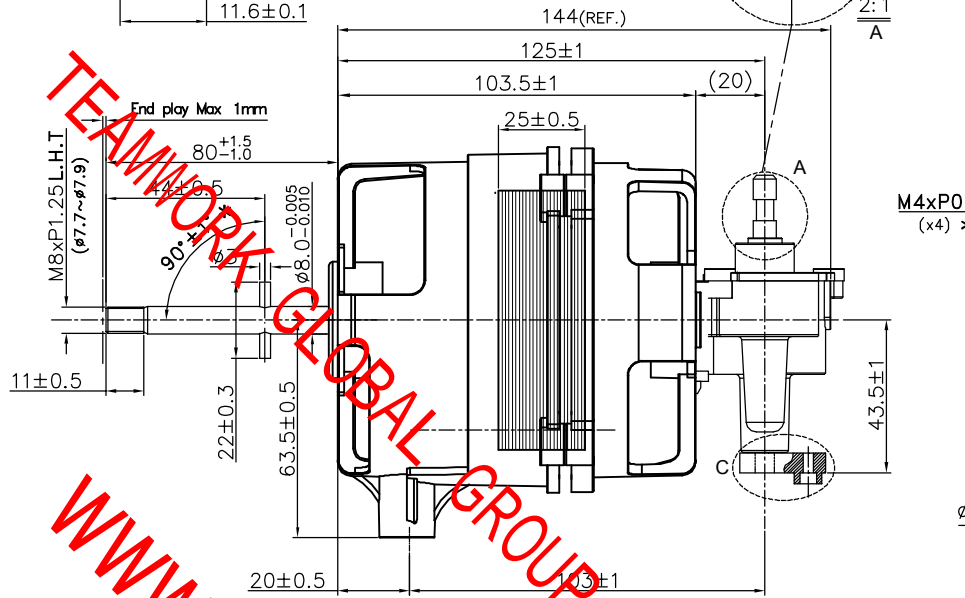
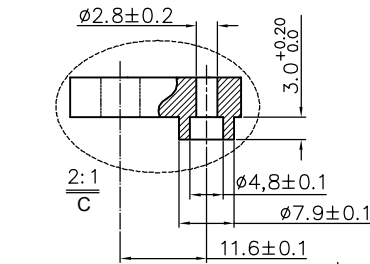
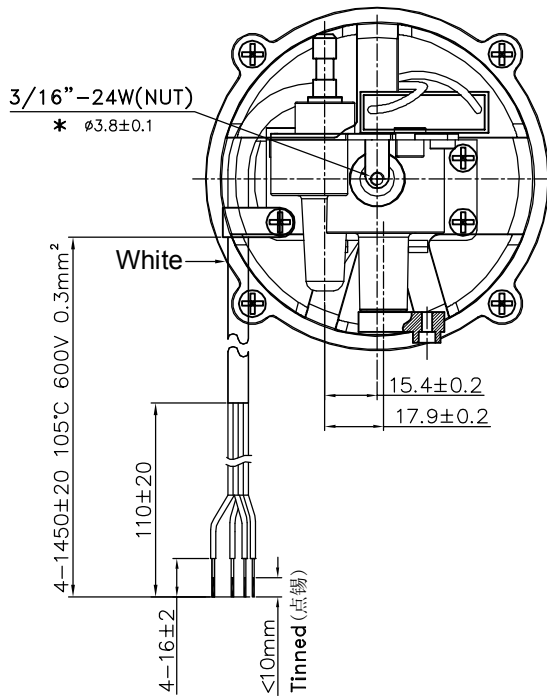
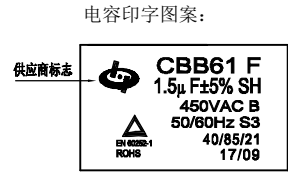
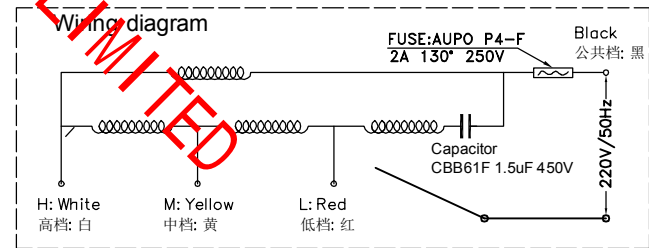


Rohs Compliance



10. PERFORMANCE (ON LOAD) (带风叶):
 HIGH=(0.29A 65W 100R.P.M)±5% 235Ω±10%
 MED=(0.28A 62W 105R.P.M)±5% 280Ω±10%
 LOW=(0.27A 59W 950R.P.M)±5% 316Ω±10%
11. START VOLTAGE (With Fan) (带风叶低压启动): ≤132V;
 12. Strength of gear box (牙箱L杆扭力): .5KG-8KG;
 13. Temp Rise ≤75K ;



GENERAL TOLERANCES ISO 2768-m	
Permissible deviations for linear dimensions	
Permissible deviations for basic size range	
>0.5	>3
...3	...30
m	±0.1 ±0.1 ±0.2 ±0.3 ±0.5 ±0.8 ±1.2 ±2
Permissible deviations for angular dimensions	
Permissible deviations for broken edges (external root chamfer heights)	
>0.5	>3
...3	...30
m	±1' ±0.5' ±0.5' ±0.5' ±0.5' ±0.5' ±0.5' ±1

REMARK:

- KIND OF MOTOR: SINGLE-PHASE ASYNCHRONOUS MOTOR WITH PERMANENT (4POLES);
- DIRECTION OF ROTATION: CLOCK WISE (FROM SHAFT END);
- SOURCE: SINGLE PHASE 220V/50Hz;
- FUSE: AUPO 130° C/2A/250V;
- CAPACITOR: 1.5uF ±5%/450V;
- STATOR: Ø90*Ø46*25mm, ROTOR: 25mm;
- LEADER WIRE: UL 0.3mm² 105°C *1450mm;
- PARAMETER: MAIN COIL: Ø0.15*810T, AUX. COIL: Ø0.13*(595T+180T+130T);
- CLASS OF INSULATION: CLASS B;

REV	DESCRIPTION	DATE	BY																																				
<table border="1"> <tr> <td>DRAWN BY: GYZ</td> <td>CHK. BY</td> <td colspan="2">APP. BY ADWARD</td> </tr> <tr> <td>Date(yy/mm/dd): 2017-11-29</td> <td>Date(yyyymmdd)</td> <td colspan="2">Date(yyyymmdd) 2017-11-2</td> </tr> <tr> <td colspan="2">MATERIAL:</td> <td colspan="2">A4</td> </tr> <tr> <td colspan="2">FINISH:</td> <td colspan="2">SCALE 3:1</td> </tr> <tr> <td colspan="2">General Tolerance ISO 2768-1 Class m (Unless specified)</td> <td colspan="2">TITLE</td> </tr> <tr> <td colspan="2">ALL DIMENSIONS ARE IN MILLIMETRES</td> <td colspan="2">OD-9025M22(New energy standard)</td> </tr> <tr> <td colspan="2">SHENZHEN ODIN IMPORT AND EXPORT CO.,LTD</td> <td colspan="2">DWG NO.</td> </tr> <tr> <td colspan="2"></td> <td colspan="2">SHEET 1 OF 1</td> </tr> <tr> <td colspan="2"></td> <td colspan="2">9025M22(New energy standard)</td> </tr> </table>				DRAWN BY: GYZ	CHK. BY	APP. BY ADWARD		Date(yy/mm/dd): 2017-11-29	Date(yyyymmdd)	Date(yyyymmdd) 2017-11-2		MATERIAL:		A4		FINISH:		SCALE 3:1		General Tolerance ISO 2768-1 Class m (Unless specified)		TITLE		ALL DIMENSIONS ARE IN MILLIMETRES		OD-9025M22(New energy standard)		SHENZHEN ODIN IMPORT AND EXPORT CO.,LTD		DWG NO.				SHEET 1 OF 1				9025M22(New energy standard)	
DRAWN BY: GYZ	CHK. BY	APP. BY ADWARD																																					
Date(yy/mm/dd): 2017-11-29	Date(yyyymmdd)	Date(yyyymmdd) 2017-11-2																																					
MATERIAL:		A4																																					
FINISH:		SCALE 3:1																																					
General Tolerance ISO 2768-1 Class m (Unless specified)		TITLE																																					
ALL DIMENSIONS ARE IN MILLIMETRES		OD-9025M22(New energy standard)																																					
SHENZHEN ODIN IMPORT AND EXPORT CO.,LTD		DWG NO.																																					
		SHEET 1 OF 1																																					
		9025M22(New energy standard)																																					

SHENZHEN ODIN IMPORT AND EXPORT CO., LTD

Outgoing Inspection Specification

Motor Mode:OD-9025M22
(New energy standard)

Number Code:9025M22
(New energy standard)

ITEM	DESCRIPTION	STANDARD	MEASURING EQUIPMENT	AQL	
1	Testing Voltage	220V/50Hz	Voltmeter	AQL1.C	
2	Stator Lamination Stack Height	25±0.5 mm	Cauper	AQL4.C	
3	Distance Between End of Brackets	103.5±1 mm	Cauper	AQL4.C	
4	Shaft Extension Length	80(+1.5/-1.0) mm	Cauper	AQL4.C	
5	End Play	1mm MAX	Cauper	AQL4.C	
6	Direction Of Rotation	△ C.W	View	AQL4.C	
7	Fuse	△ AUPO F1-2A 130°C/2A/250V	View	AQL1.C	
8	Load Fan	18"	View	AQL4.0	
9	Hi-Pot Test	AC 1500V/5mA/1sec	Hi-pot Tester	AQL1.C	
10	Strength Of Gear Box (牙箱L杆扭力)	5KG-8KG	Torsional Dynamometer	AQL4.C	
11	Vibration	11.2 mm/s	Vibration Tester	AQL4.C	
12	Noise Level	≤60dB(A) at 1m working in unit	Noise Meter	AQL4.C	
13	Lead Wire	△ UL VW-1 105° 600V 0.3mm ² 1450±20	Ruler	AQL4.C	
14	On Load Performance	H-Speed (RPM)	1100±5%	Stroboscope	AQL4.C
		H-Power (W)	65±5%	Wattmeter	AQL4.C
		M-Speed (RPM)	1050±5%	Stroboscope	AQL4.C
		M-Power (W)	62±5%	Wattmeter	AQL4.C
		L-Speed (RPM)	950±5%	Stroboscope	AQL4.C
		L-Power (W)	59±5%	Wattmeter	AQL4.C

Remark: The Item Noted With "△" Is Special And Important
Outline Drawing: OD-9025M22 (New energy standard)

Issued By:GYZ 2017-11-29

Checked By:

ApprovedBy:Adward2017-11-29